



DIVYAKUSH CONSTRUCTIONS

(A unit of DYTR Industries Pvt. Ltd.)

COMPANY PROFILE



www.divyakushconstructions.com

TABLE OF CONTENTS

1

About Us

2

Mission and Vision

3

Our Services

4

Projects

5

Why choose us



About Us.

Introduction

We specialize in delivering a diverse range of construction services, including Pre-Engineered Building (PEB) sheds, industrial facilities, and corporate offices. Our expertise also encompasses road construction, power and energy infrastructure, as well as the development of luxurious swimming pools and hotel buildings. Additionally, we excel in designing modern office interiors and constructing high-quality farmhouses.

Committed to sustainable and efficient building practices, we ensure that every project meets the highest standards while promoting creativity, functionality, and long-term community growth. The structures we create offer more than just physical spaces — we deliver environments that empower our clients to achieve their goals.



20+
Years
of Exp.

MISSION

To integrate the entire building lifecycle into a seamless platform to redefine how the world builds.

VISION

Building a world where construction is efficient, sustainable, and driven by cutting-edge technology and integrity.

VALUES

Passion. Integrity. Hard work. Professionalism. Take care of. That is the value that we have been building our brand.

Our Services



PEB SHEDS

Efficient and durable pre-engineered building solutions tailored to your needs. These structures offer versatility and rapid construction for various applications.



INDUSTRIAL BUILDINGS

Robust and functional structures designed to enhance productivity and efficiency. Built with precision to support large-scale industrial operations.



CORPORATE BUILDINGS

Modern, professional spaces that align with your brand's ethos. Designed for functionality, aesthetics, and a productive work environment.



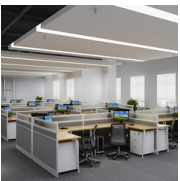
ROAD CONSTRUCTION

High-quality road infrastructure that improves connectivity and mobility. Built to last, ensuring safety and reliability for years to come.



POWER & ENERGY INFRASTRUCTURE

Innovative and reliable energy solutions for industrial and commercial sectors. Supporting growth through sustainable and efficient infrastructure.



OFFICE INTERIORS

Creative and inspiring office spaces designed for productivity and collaboration. Thoughtfully crafted to reflect your company's culture and values.



HOTEL BUILDINGS

Sophisticated hospitality spaces that blend luxury with functionality. Designed to offer memorable experiences for guests and operators alike.



FARMHOUSES

Exclusive retreats that offer serenity and comfort. Tailored designs to create your perfect getaway amidst nature.

Our Projects



JC Yamato

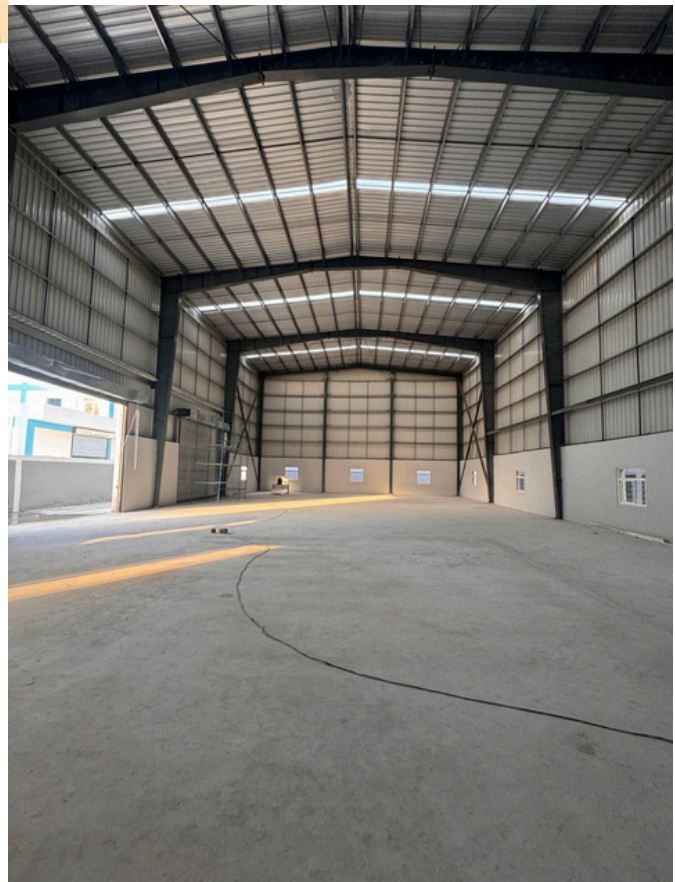
(External View)

Location: Karoli, Bhiwadi
Project Area: 10,000 sq. feet

JC Yamato

(Internal View)

Location: Karoli, Bhiwadi
Project Area: 10,000 sq. feet





PEB Sheds

(External View)

Location - Kharabwadi, Pune
Area - 1,00,000 sq. feet

PEB Sheds

(Internal View)

Location - Kharabwadi, Pune
Area - 1,00,000 sq. feet





Donaldsons IndoSpace

(External View)

Location Pune

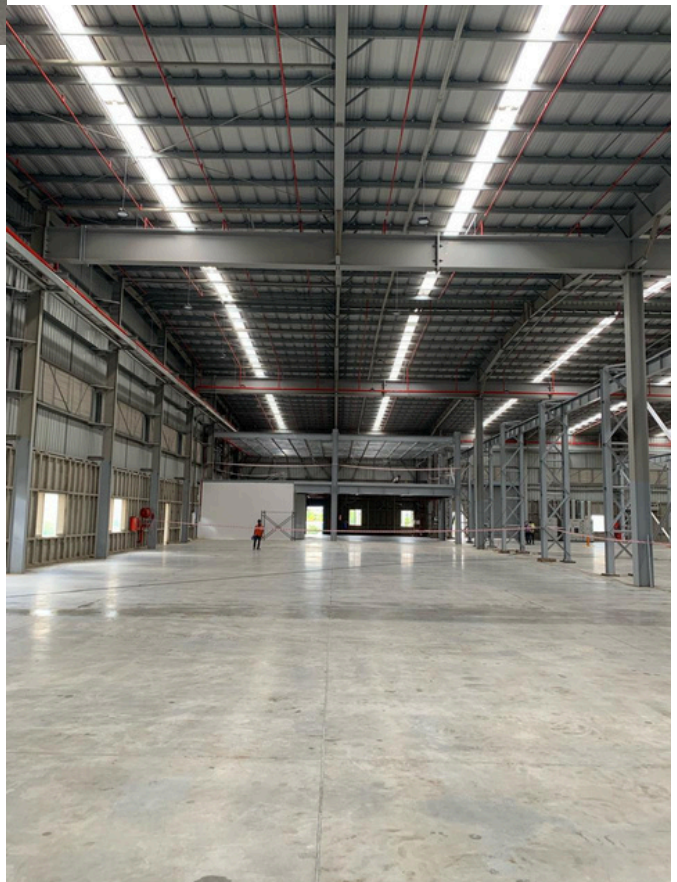
Project Area - 45,000 sq. feet

Donaldsons IndoSpace

(Internal View)

Location Pune

Project Area - 45,000 sq. feet





Ameya for Bajaj Auto with Ameya

(Industrial Building)

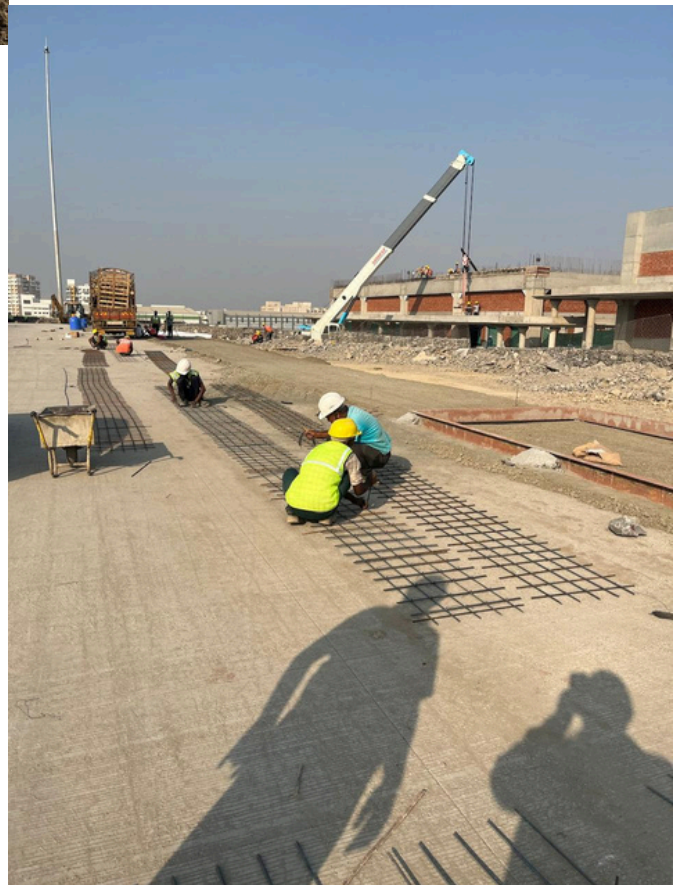
Location Pune

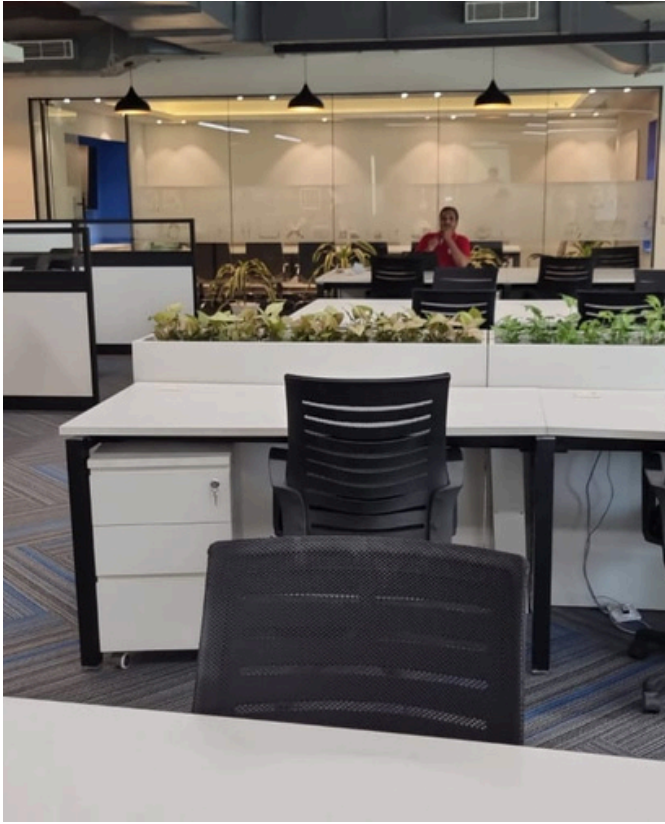
Project Area - 1,00,000 sq. feet

Road Construction

Location - Chakan, Pune

Project Area - 45,000 sq feet





Pladis

(Office Infra)

Location: Unitech Cyber park,
Gurugram

Project Area: 4,000 sq. feet

POWER & ENERGY INFRA

Location - Indospace
Chakan Pune





Senser Labs

Location- Manesar, Gurugram
Project Area - 2,000 sq. feet

Fuel Filter Lab

Location- Manesar, Gurugram
Project Area - 4,000 sq feet





Green Decore

Corporate building for
peregrine guarding

Location- Plot 13 sec 18
electronic city Gurugram
Project Area - 40,000 sq. feet

P.R Seeds

Excavation in progress
production plant (under
construction)

Location- Tuticorin, Tamilnadu
Project Area - 1,00,000 sq feet





Divyleela Resort

Location- Manesar, Gurugram
Project Area - 10,000 sq. feet

Swimming Pool

Location- Manesar, Gurugram
Project Area - 600 sq. feet



Why Choose Us?

At Divyakush Interiors and Constructions, we stand out because of our unwavering commitment to quality, innovation, and customer satisfaction. With over 20 years of experience in the industry, we bring a wealth of knowledge and craftsmanship to every project. Here's why clients trust us:



20+ YEARS OF EXPERIENCE

A legacy of excellence in construction and design.



CUSTOMER-CENTRIC APPROACH

Tailored solutions to meet your unique needs.



COMMITMENT TO QUALITY

Premium materials, advanced techniques, and exceptional results.




END-TO-END SOLUTIONS

From design to execution, we handle it all.

www.divyakushconstructions.com



 +91 9899796192
+91 95600 56065

 info@divyakushconstructions.com